

## Developmental Policies Data

Of the 16 CC in MD, 11 of them have been examined thus far<sup>1</sup>. Data were collected by examination of each institutions current catalog, student handbook, and webpage documentation. In general most institutions do not publicly provide many specifics about their developmental programs. Furthermore, what *is* available is often times difficult to interpret, therefore the summarization provided below are based on *our* interpretation of the documentation provided.

## Placement Policies

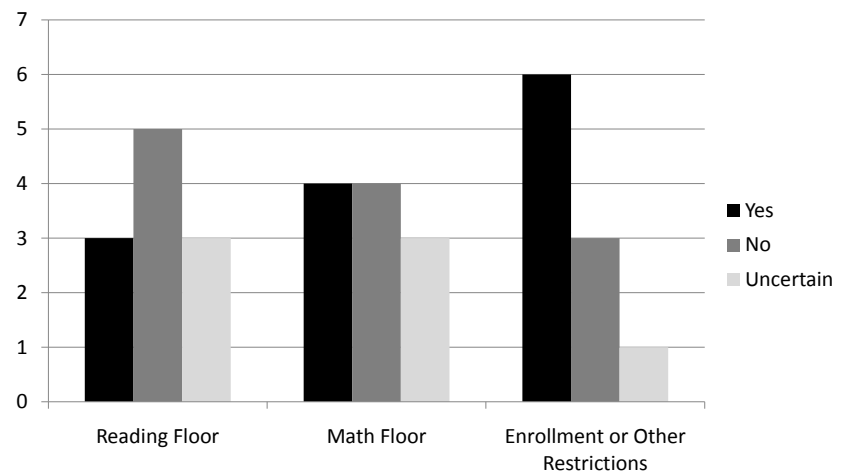
The data show that currently MD CC are split in their usage of floors. Based on the current findings all institutions using a floor had continuing education requirements that were the gateway into academic developmental coursework.

The majority of institutions have restrictions for students designated as developmental.

There was a range of restrictions:

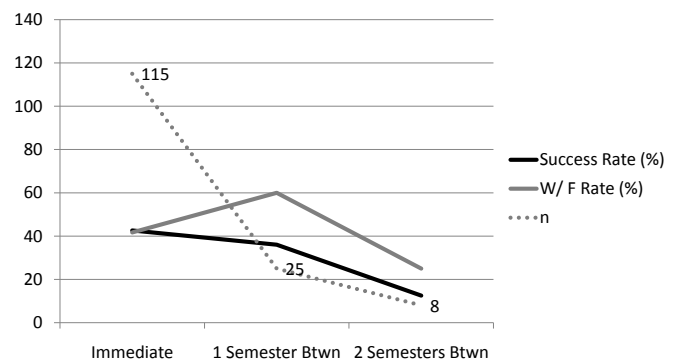
- Enroll in first semester or within first 15 billable hours
- Continuous enrollment in developmental sequence once it is begun
- Following sequence once it has begun (no retesting and jumping forward)
- Completion of sequence within first X number of billable hours
- Limits on maximum semester course-load

## Placement Policies for CC in MD



Some evidence that requiring continuous enrollment is beneficial:

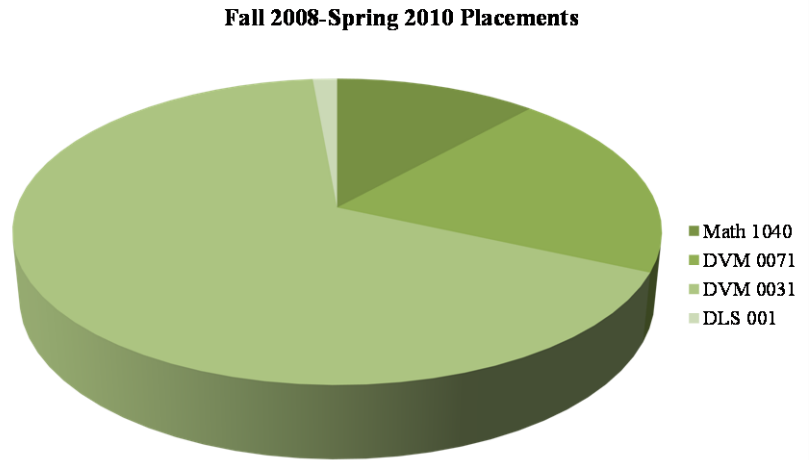
## Success Rate and time off between DLS 0011 and DVM 0031



<sup>1</sup> Garrett, Hagerstown, Harford, Howard, and Montgomery have currently not been examined.

### Other Interesting Facts:

- In 2008, 82.9% of PGCCPS High School seniors indicated they planned to attend college (SchoolMatters.com).
- 22 states or higher education systems have reduced or eliminated remedial coursework<sup>2</sup>.



---

<sup>2</sup> Association for the Study of Higher Education/Lumina Foundation for Education. "Ending College Remediation: Consequences for Access and Opportunity," ASHE/Lumina Policy Briefs and Critical Essays No. 2, 2007. <http://www.elps.hs.iastate.edu/ASHE-Lumina/document/Parker%20Brief-Web.pdf>